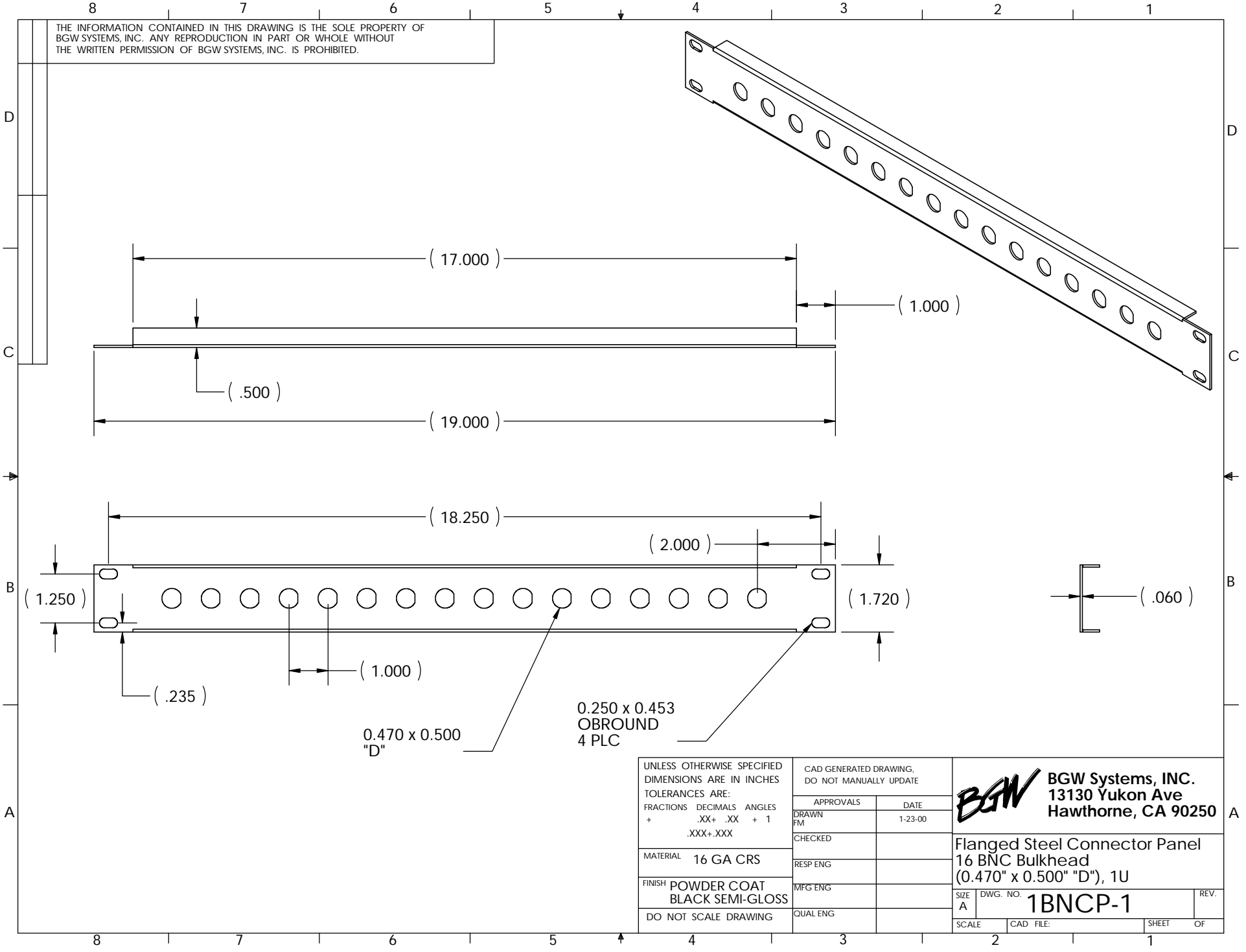


THE INFORMATION CONTAINED IN THIS DRAWING IS THE SOLE PROPERTY OF
 BGW SYSTEMS, INC. ANY REPRODUCTION IN PART OR WHOLE WITHOUT
 THE WRITTEN PERMISSION OF BGW SYSTEMS, INC. IS PROHIBITED.



0.470 x 0.500
 "D"

0.250 x 0.453
 OBROUND
 4 PLC

UNLESS OTHERWISE SPECIFIED DIMENSIONS ARE IN INCHES TOLERANCES ARE: FRACTIONS DECIMALS ANGLES + .XX+ .XX + 1 .XXX+.XXX		CAD GENERATED DRAWING, DO NOT MANUALLY UPDATE		BGW BGW Systems, INC. 13130 Yukon Ave Hawthorne, CA 90250	A
		APPROVALS	DATE		
MATERIAL 16 GA CRS		DRAWN FM	1-23-00	Flanged Steel Connector Panel 16 BNC Bulkhead (0.470" x 0.500" "D"), 1U	
FINISH POWDER COAT BLACK SEMI-GLOSS		CHECKED		SIZE A	DWG. NO. 1BNCP-1
DO NOT SCALE DRAWING		RESP ENG		SCALE	CAD FILE:
		MFG ENG		SHEET OF	
		QUAL ENG			