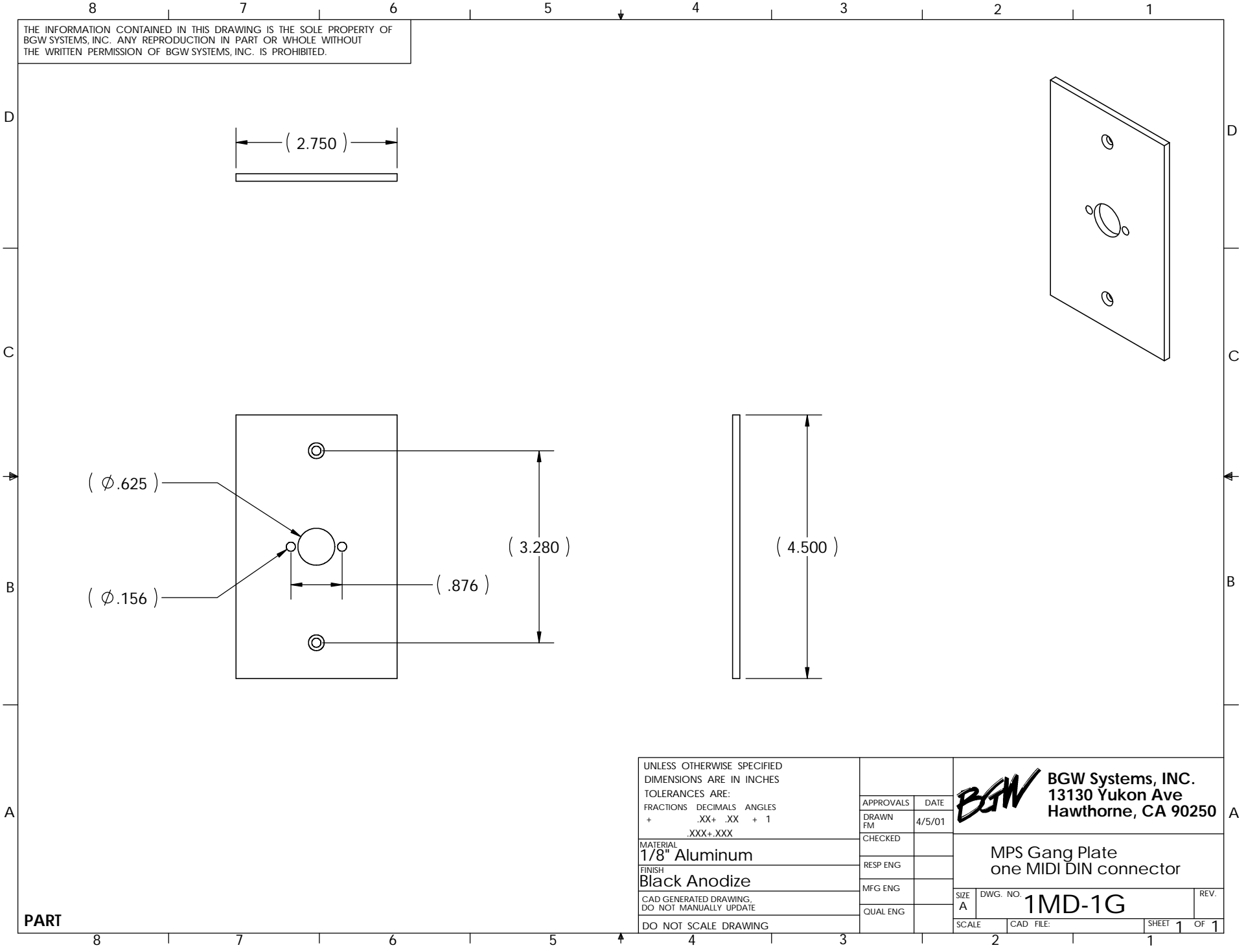


THE INFORMATION CONTAINED IN THIS DRAWING IS THE SOLE PROPERTY OF BGW SYSTEMS, INC. ANY REPRODUCTION IN PART OR WHOLE WITHOUT THE WRITTEN PERMISSION OF BGW SYSTEMS, INC. IS PROHIBITED.



UNLESS OTHERWISE SPECIFIED
DIMENSIONS ARE IN INCHES
TOLERANCES ARE:
FRACTIONS DECIMALS ANGLES
+ .XX+ .XX + 1
.XXX+ .XXX

MATERIAL
1/8" Aluminum

FINISH
Black Anodize

CAD GENERATED DRAWING,
DO NOT MANUALLY UPDATE

DO NOT SCALE DRAWING

APPROVALS	DATE
DRAWN FM	4/5/01
CHECKED	
RESP ENG	
MFG ENG	
QUAL ENG	

BGW BGW Systems, INC.
13130 Yukon Ave
Hawthorne, CA 90250

MPS Gang Plate
one MIDI DIN connector

SIZE A DWG. NO. **1MD-1G** REV.

SCALE CAD FILE: SHEET 1 OF 1

PART