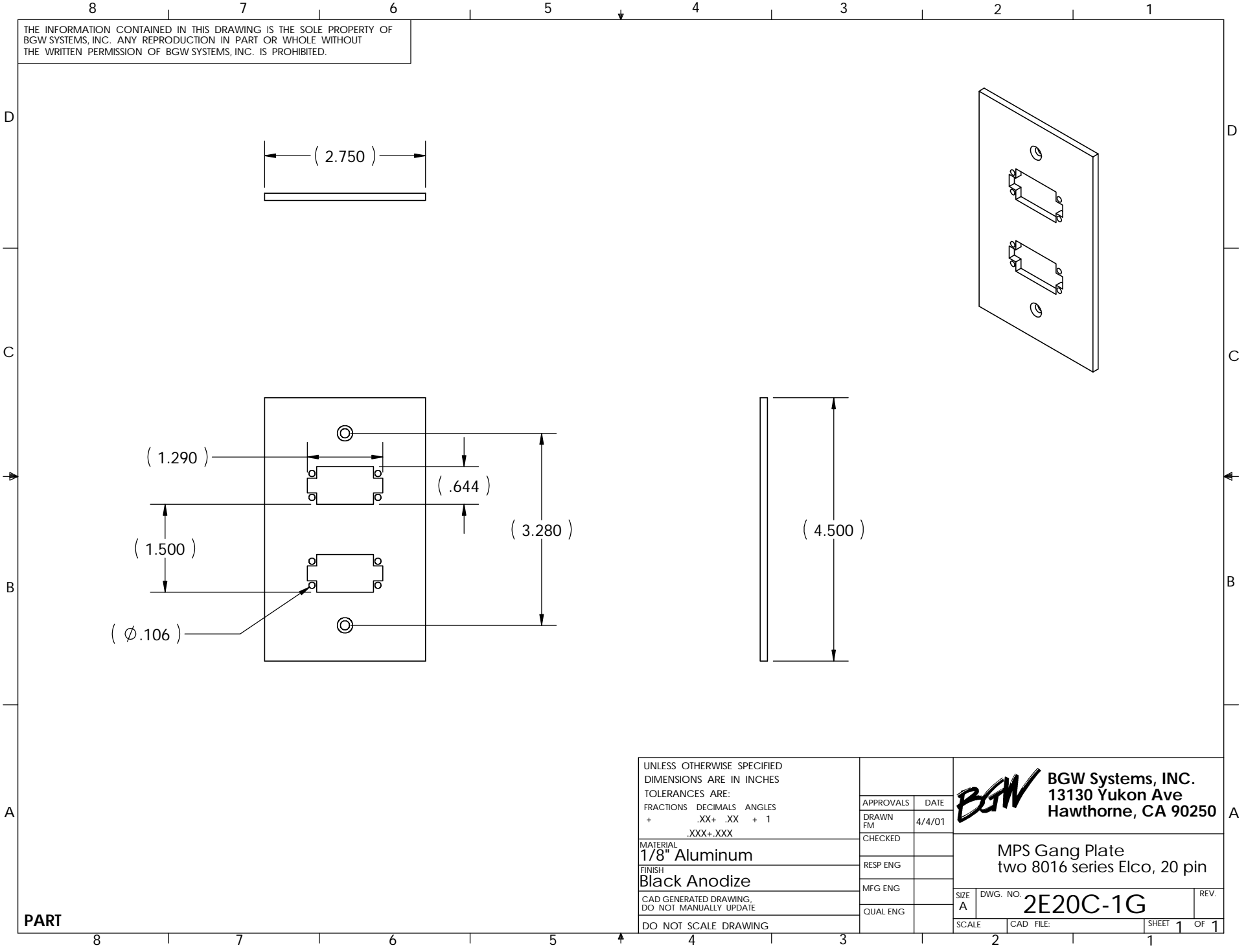



THE INFORMATION CONTAINED IN THIS DRAWING IS THE SOLE PROPERTY OF BGW SYSTEMS, INC. ANY REPRODUCTION IN PART OR WHOLE WITHOUT THE WRITTEN PERMISSION OF BGW SYSTEMS, INC. IS PROHIBITED.



UNLESS OTHERWISE SPECIFIED DIMENSIONS ARE IN INCHES TOLERANCES ARE: FRACTIONS DECIMALS ANGLES + .XX+ .XX + 1 .XXX+ .XXX	APPROVALS	DATE	 BGW Systems, INC. 13130 Yukon Ave Hawthorne, CA 90250
	DRAWN FM	4/4/01	
	CHECKED		
	RESP ENG		
	MFG ENG		
MATERIAL 1/8" Aluminum FINISH Black Anodize CAD GENERATED DRAWING, DO NOT MANUALLY UPDATE DO NOT SCALE DRAWING	QUAL ENG		MPS Gang Plate two 8016 series Elco, 20 pin
	SCALE	CAD FILE:	SIZE A DWG. NO. 2E20C-1G SHEET 1 OF 1

PART