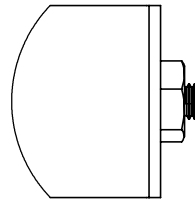


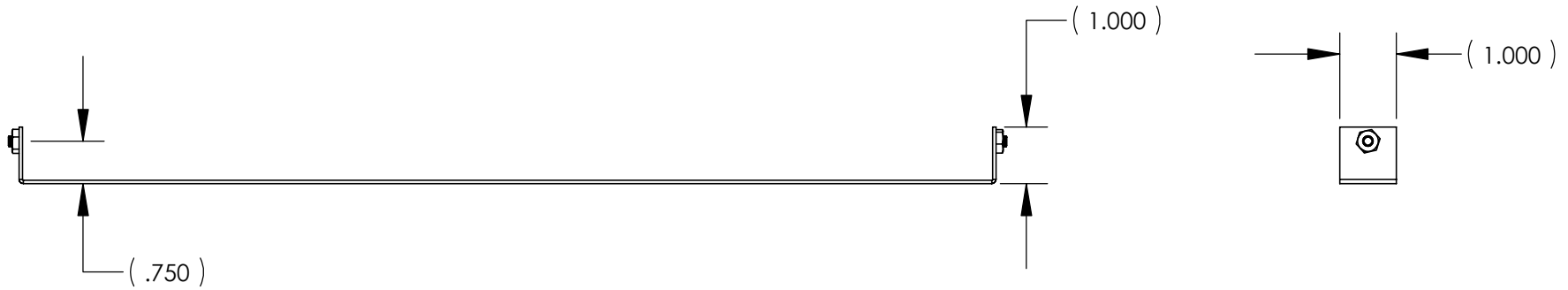
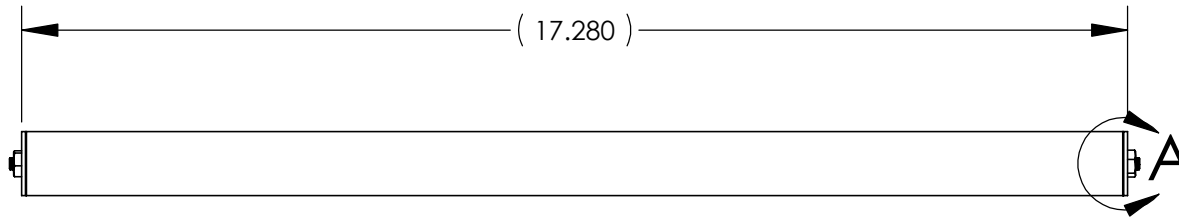
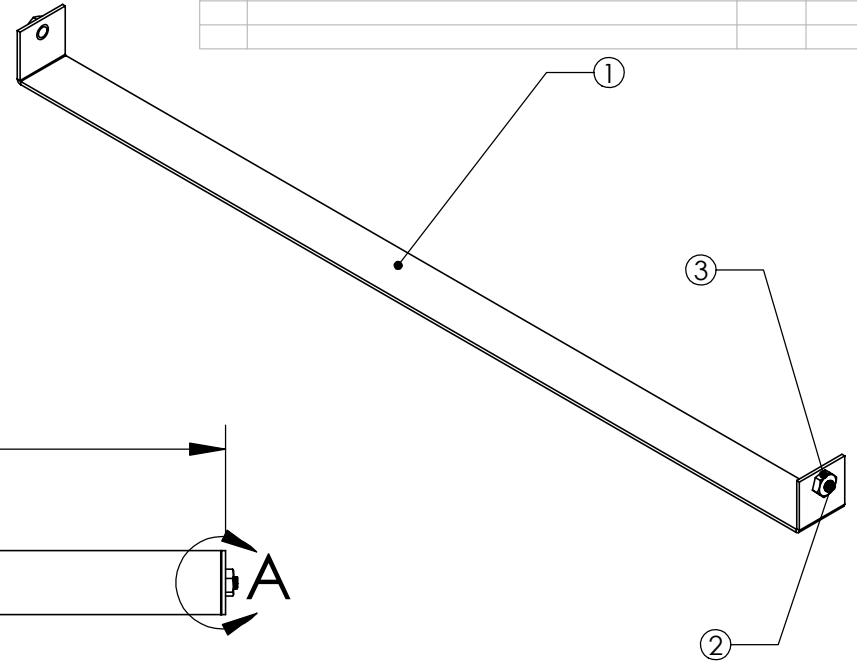
THE INFORMATION CONTAINED IN THIS DRAWING IS THE SOLE PROPERTY OF BGW SYSTEMS, INC. ANY REPRODUCTION IN PART OR WHOLE WITHOUT THE WRITTEN PERMISSION OF BGW SYSTEMS, INC. IS PROHIBITED.

REVISIONS			
REV.	DESCRIPTION	DATE	APPROVED

ITEM NO.	QTY.	PART NO.	DESCRIPTION
1	1	BR1-1	
2	2	2001-0322	PEM STUD 10-32x1/4
3	2	8553-0375	Nut Hex Kep 10-32 x 3/8



DETAIL A  
SCALE 1 : 1



- NOTES:  
 1) Insert studs after powder coating  
 2) Install nut before packaging

UNLESS OTHERWISE SPECIFIED  
 DIMENSIONS ARE IN INCHES  
 TOLERANCES ARE:  
 FRACTIONS DECIMALS ANGLES  
 .XX ± 0.03 ± 0.5°  
 .XXX ± 0.010

MATERIAL  
**16 GA CRS**

FINISH  
**Cardinal T002-BK08**

CAD GENERATED DRAWING.  
 DO NOT MANUALLY UPDATE

DO NOT SCALE DRAWING

APPROVALS	DATE	<b>BGW</b> <b>BGW Systems, INC.</b> 13130 Yukon Ave Hawthorne, CA 90250
DRAWN FM	12/10/02	
CHECKED		
RESP ENG		
MFG ENG		Hold Down Bracket, 1" For RMT-1, RMT-2, RMT22-2
QUAL ENG		SIZE DWG. NO. A BR1-1
SCALE	CAD FILE:	REV. A
		SHEET 1 OF 1