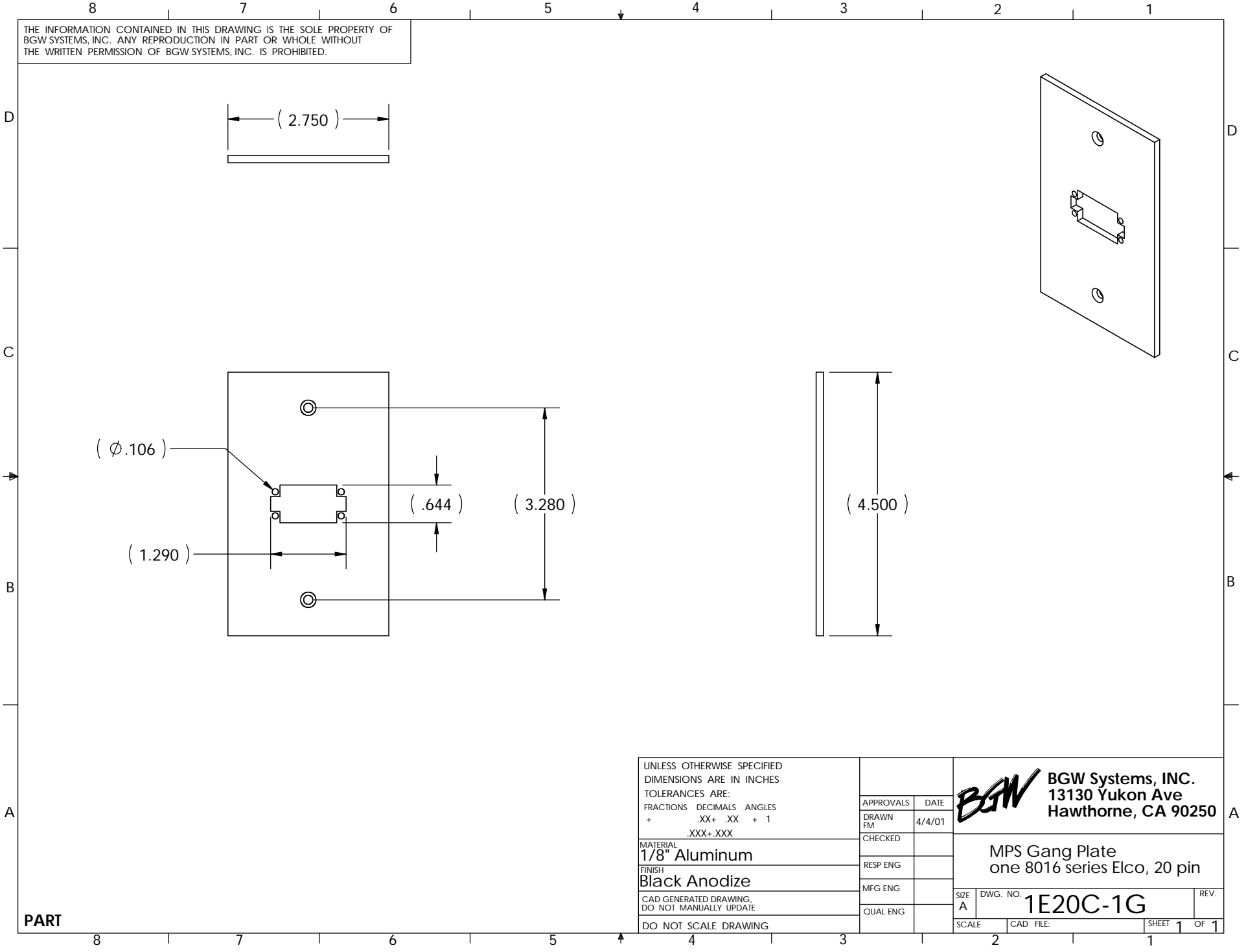



THE INFORMATION CONTAINED IN THIS DRAWING IS THE SOLE PROPERTY OF BGW SYSTEMS, INC. ANY REPRODUCTION IN PART OR WHOLE WITHOUT THE WRITTEN PERMISSION OF BGW SYSTEMS, INC. IS PROHIBITED.



UNLESS OTHERWISE SPECIFIED DIMENSIONS ARE IN INCHES TOLERANCES ARE: FRACTIONS DECIMALS ANGLES + .XX+ .XX + 1 .XXX+ .XXX		APPROVALS	DATE	 BGW Systems, INC. 13130 Yukon Ave Hawthorne, CA 90250
MATERIAL	1/8" Aluminum	DRAWN	4/4/01	
FINISH	Black Anodize	CHECKED		
CAD GENERATED DRAWING, DO NOT MANUALLY UPDATE		RESP ENG		
DO NOT SCALE DRAWING		MFG ENG		MPS Gang Plate one 8016 series Elco, 20 pin
		QUAL ENG		
		SCALE	CAD FILE:	SIZE A DWG. NO. 1E20C-1G REV.
				SHEET 1 OF 1

PART