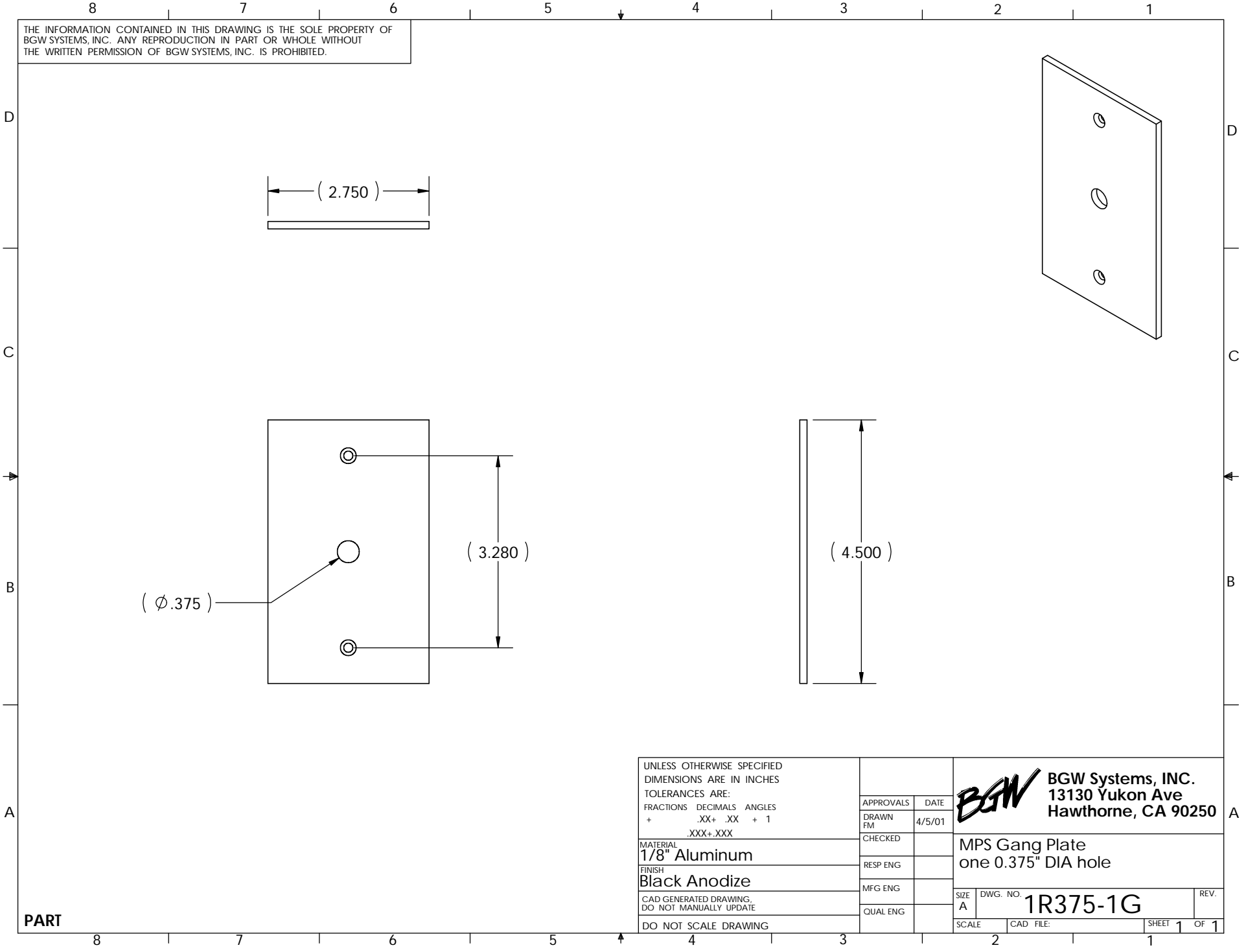



THE INFORMATION CONTAINED IN THIS DRAWING IS THE SOLE PROPERTY OF BGW SYSTEMS, INC. ANY REPRODUCTION IN PART OR WHOLE WITHOUT THE WRITTEN PERMISSION OF BGW SYSTEMS, INC. IS PROHIBITED.



UNLESS OTHERWISE SPECIFIED DIMENSIONS ARE IN INCHES TOLERANCES ARE: FRACTIONS DECIMALS ANGLES + .XX+ .XX + 1 .XXX+ .XXX	APPROVALS	DATE	 BGW Systems, INC. 13130 Yukon Ave Hawthorne, CA 90250		
	DRAWN FM	4/5/01			
	CHECKED				
	RESP ENG				
MATERIAL 1/8" Aluminum	MFG ENG		MPS Gang Plate one 0.375" DIA hole		
FINISH Black Anodize	QUAL ENG				
CAD GENERATED DRAWING, DO NOT MANUALLY UPDATE			SIZE A	DWG. NO. 1R375-1G	REV.
DO NOT SCALE DRAWING			SCALE	CAD FILE:	SHEET 1 OF 1

PART