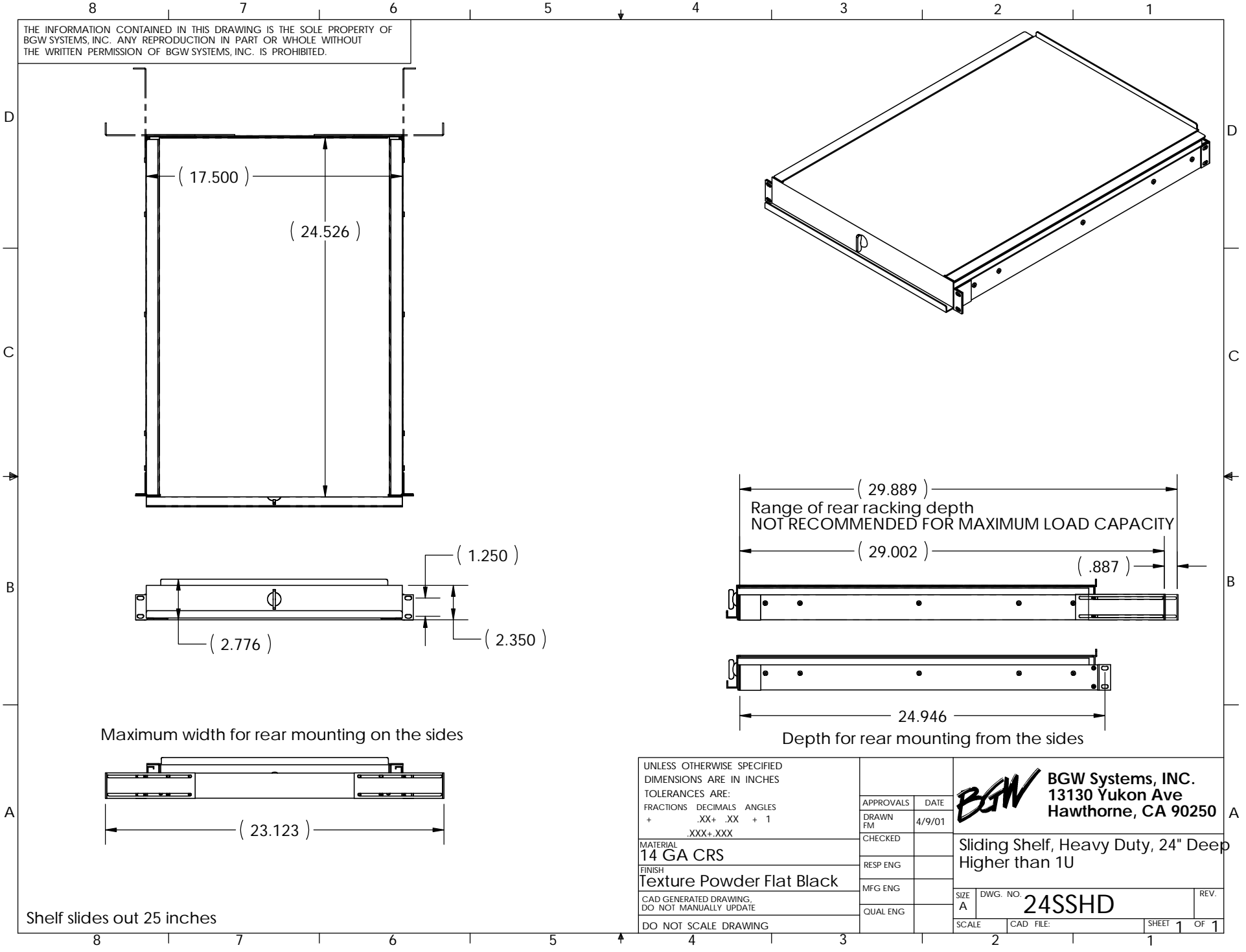


THE INFORMATION CONTAINED IN THIS DRAWING IS THE SOLE PROPERTY OF BGW SYSTEMS, INC. ANY REPRODUCTION IN PART OR WHOLE WITHOUT THE WRITTEN PERMISSION OF BGW SYSTEMS, INC. IS PROHIBITED.



Shelf slides out 25 inches

(29.889)
 Range of rear racking depth
 NOT RECOMMENDED FOR MAXIMUM LOAD CAPACITY

(29.002) (.887)

24.946
 Depth for rear mounting from the sides

Maximum width for rear mounting on the sides

(23.123)

UNLESS OTHERWISE SPECIFIED DIMENSIONS ARE IN INCHES TOLERANCES ARE: FRACTIONS DECIMALS ANGLES + .XX+ .XX + 1 .XXX+ .XXX	APPROVALS	DATE	BGW Systems, INC. 13130 Yukon Ave Hawthorne, CA 90250		
	DRAWN FM	4/9/01			
	CHECKED				
	RESP ENG				
MATERIAL 14 GA CRS	MFG ENG		Sliding Shelf, Heavy Duty, 24" Deep Higher than 1U		
FINISH Texture Powder Flat Black	QUAL ENG				
CAD GENERATED DRAWING, DO NOT MANUALLY UPDATE			SIZE A	DWG. NO. 24SSHD	REV.
DO NOT SCALE DRAWING			SCALE	CAD FILE:	SHEET 1 OF 1