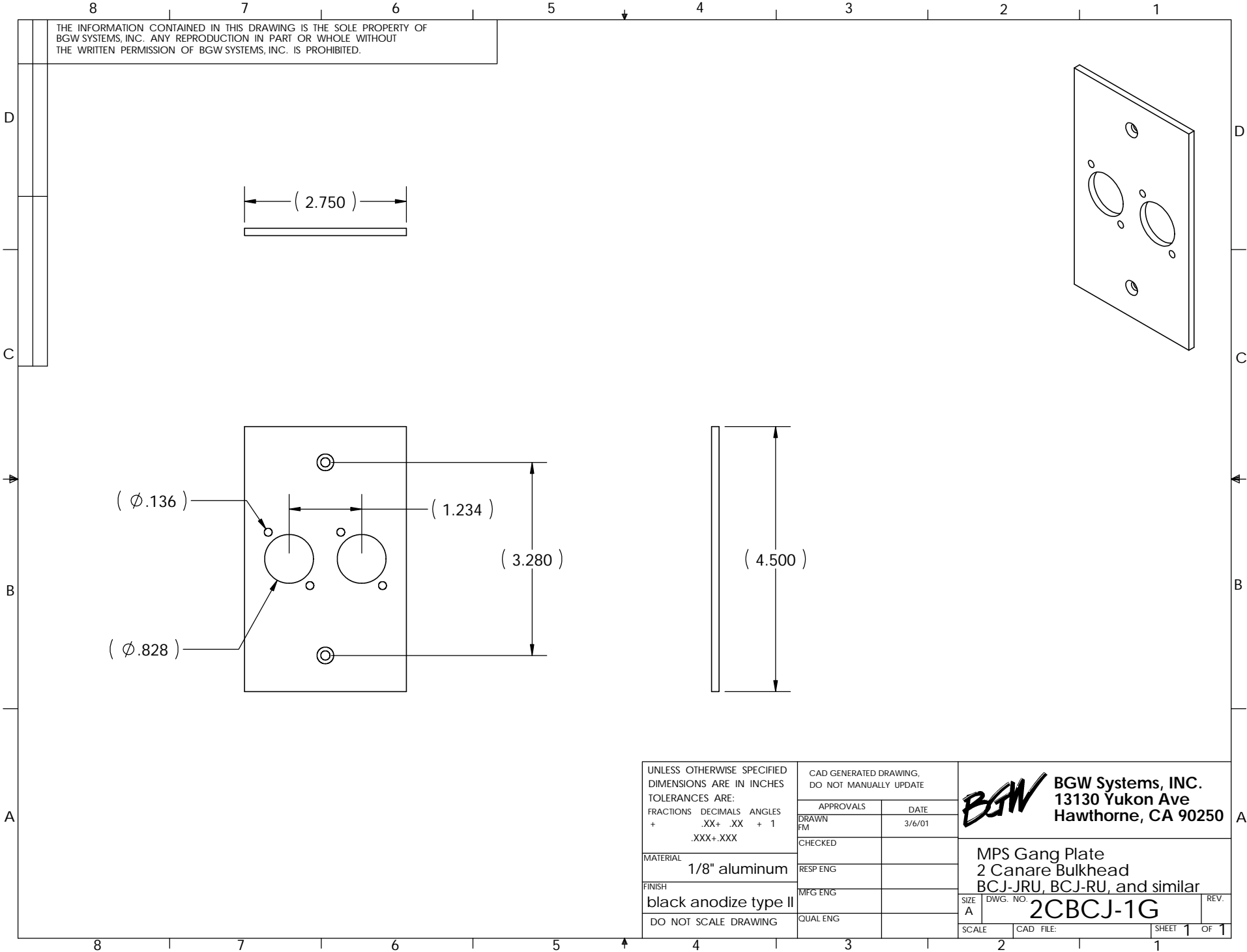



THE INFORMATION CONTAINED IN THIS DRAWING IS THE SOLE PROPERTY OF  
 BGW SYSTEMS, INC. ANY REPRODUCTION IN PART OR WHOLE WITHOUT  
 THE WRITTEN PERMISSION OF BGW SYSTEMS, INC. IS PROHIBITED.



|   |  |                |  |   |
|---|--|----------------|--|---|
| UNLESS OTHERWISE SPECIFIED<br>DIMENSIONS ARE IN INCHES<br>TOLERANCES ARE:<br>FRACTIONS    DECIMALS    ANGLES<br>+                .XX+ .XX    + 1<br>.XXX+.XXX | CAD GENERATED DRAWING,<br>DO NOT MANUALLY UPDATE |                |  <b>BGW Systems, INC.</b><br>13130 Yukon Ave<br>Hawthorne, CA 90250 |   |
|   | APPROVALS<br>DRAWN<br>FM                         | DATE<br>3/6/01 |  | MPS Gang Plate<br>2 Canare Bulkhead<br>BCJ-JRU, BCJ-RU, and similar<br>DWG. NO. <b>2CBCJ-1G</b> |
|   | CHECKED  |                | SIZE<br>A  |   |
|   | MATERIAL<br>1/8" aluminum                        | RESP ENG       | SCALE<br>2   |   |
| FINISH<br>black anodize type II   | MFG ENG  | QUAL ENG       | SHEET 1 OF 1   |   |