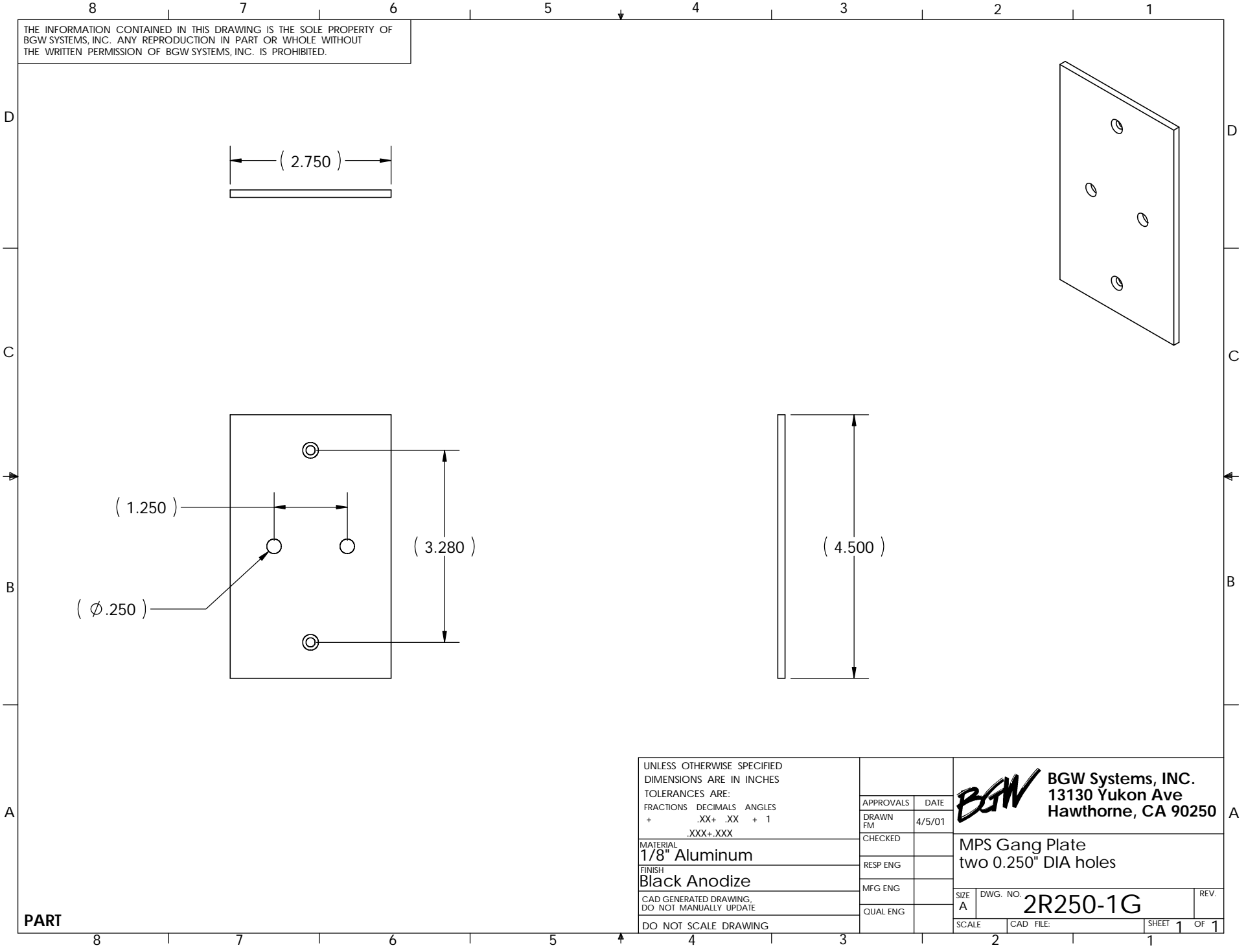



THE INFORMATION CONTAINED IN THIS DRAWING IS THE SOLE PROPERTY OF BGW SYSTEMS, INC. ANY REPRODUCTION IN PART OR WHOLE WITHOUT THE WRITTEN PERMISSION OF BGW SYSTEMS, INC. IS PROHIBITED.



| | | | |
|--|-------------|--------|--|
| UNLESS OTHERWISE SPECIFIED DIMENSIONS ARE IN INCHES TOLERANCES ARE: FRACTIONS DECIMALS ANGLES + .XX+ .XX + 1 .XXX+ .XXX | APPROVALS | DATE |  BGW Systems, INC. 13130 Yukon Ave Hawthorne, CA 90250 |
| | DRAWN FM | 4/5/01 | |
| | CHECKED | | |
| | RESP ENG | | |
| MATERIAL 1/8" Aluminum | MFG ENG | | MPS Gang Plate two 0.250" DIA holes |
| FINISH Black Anodize | QUAL ENG | | SIZE A |
| CAD GENERATED DRAWING, DO NOT MANUALLY UPDATE | | | DWG. NO. 2R250-1G |
| DO NOT SCALE DRAWING | | | SCALE |
| | | | CAD FILE: |
| | | | SHEET 1 OF 1 |

PART