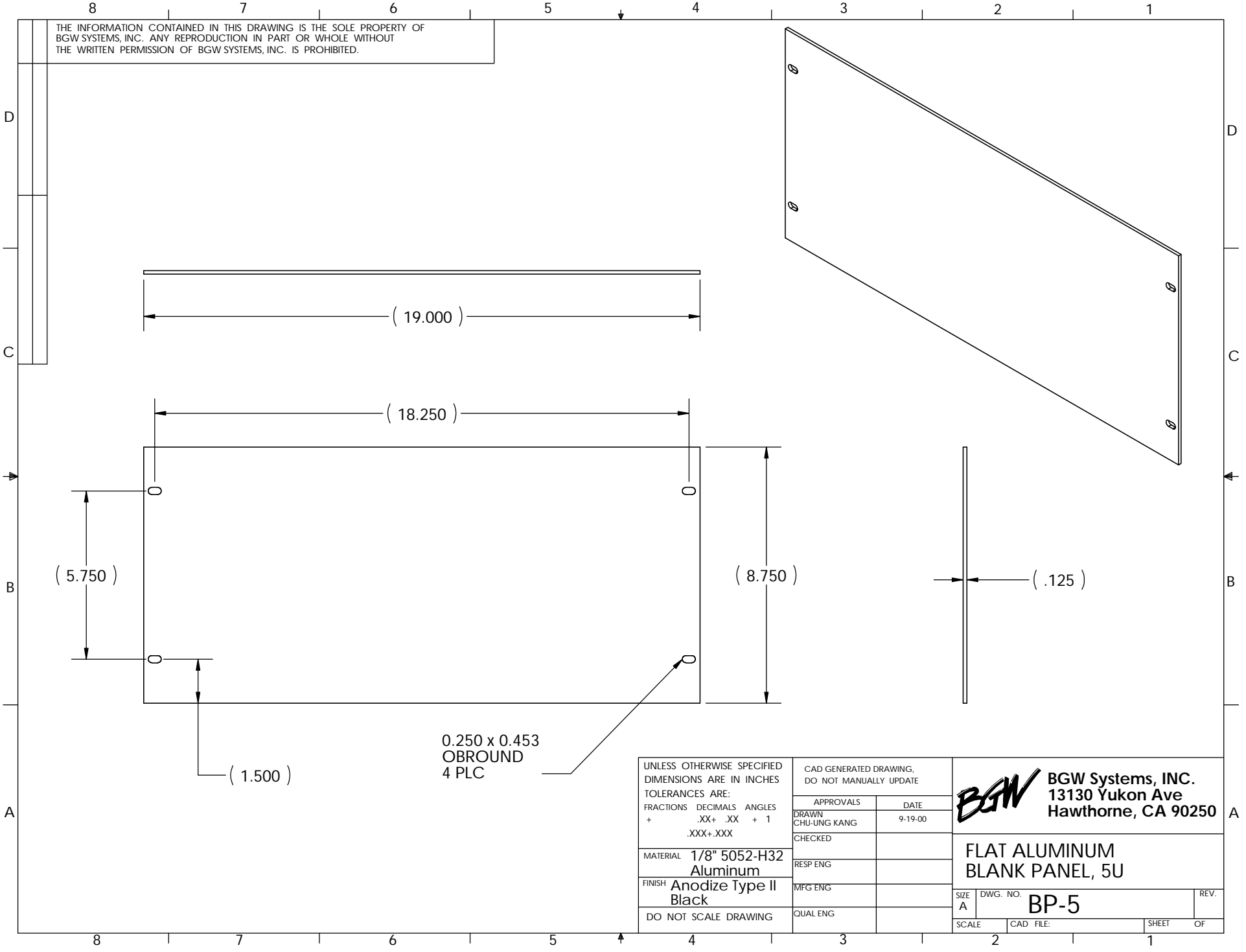


THE INFORMATION CONTAINED IN THIS DRAWING IS THE SOLE PROPERTY OF
 BGW SYSTEMS, INC. ANY REPRODUCTION IN PART OR WHOLE WITHOUT
 THE WRITTEN PERMISSION OF BGW SYSTEMS, INC. IS PROHIBITED.



(5.750)

(19.000)


(18.250)

(8.750)

(.125)

(1.500)

0.250 x 0.453
 OBOUND
 4 PLC

UNLESS OTHERWISE SPECIFIED DIMENSIONS ARE IN INCHES TOLERANCES ARE: FRACTIONS DECIMALS ANGLES + .XX+ .XX + 1 .XXX+.XXX	CAD GENERATED DRAWING, DO NOT MANUALLY UPDATE		 BGW Systems, INC. 13130 Yukon Ave Hawthorne, CA 90250
	APPROVALS DRAWN CHU-UNG KANG	DATE 9-19-00	
	CHECKED RESP ENG	MFG ENG	SIZE A
	MATERIAL 1/8" 5052-H32 Aluminum FINISH Anodize Type II Black DO NOT SCALE DRAWING	QUAL ENG	DWG. NO. BP-5

SCALE	CAD FILE:	SHEET	OF
		2	1