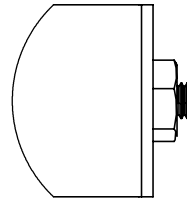


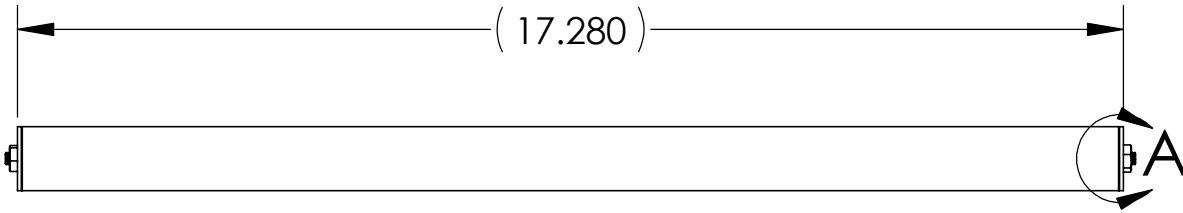
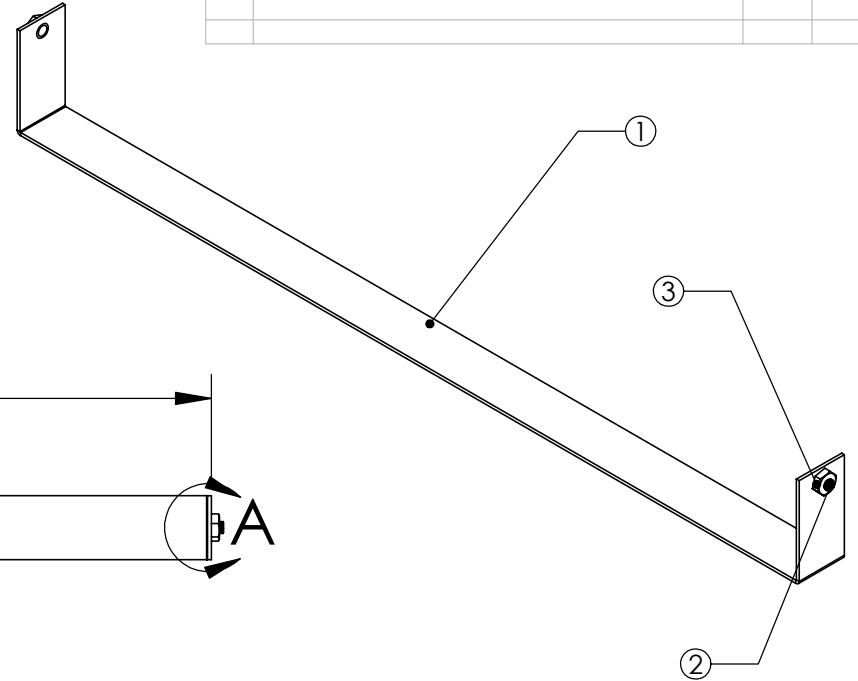
THE INFORMATION CONTAINED IN THIS DRAWING IS THE SOLE PROPERTY OF BGW SYSTEMS, INC. ANY REPRODUCTION IN PART OR WHOLE WITHOUT THE WRITTEN PERMISSION OF BGW SYSTEMS, INC. IS PROHIBITED.

| REVISIONS | | | |
|-----------|-------------|------|----------|
| REV. | DESCRIPTION | DATE | APPROVED |
| | | | |
| | | | |
| | | | |

| ITEM NO. | QTY. | PART NO. | DESCRIPTION |
|----------|------|-----------|-------------------------|
| 1 | 1 | BR2-2 | |
| 2 | 2 | 2001-0322 | PEM STUD 10-32x1/4 |
| 3 | 2 | 8553-0375 | Nut Hex Kep 10-32 x 3/8 |



DETAIL A
SCALE 1:1



- NOTES:
 1) Insert studs after powder coating
 2) Install nut before packaging

UNLESS OTHERWISE SPECIFIED
 DIMENSIONS ARE IN INCHES
 TOLERANCES ARE:

FRACTIONS DECIMALS ANGLES
 .XX ± 0.03 ± 0.5°
 .XXX ± 0.010

MATERIAL
16 GA CRS
 FINISH
Cardinal T002-BK08

CAD GENERATED DRAWING.
 DO NOT MANUALLY UPDATE

DO NOT SCALE DRAWING

| | | |
|-----------------|----------|---|
| APPROVALS | DATE | BGW BGW Systems, INC. 13130 Yukon Ave Hawthorne, CA 90250 |
| DRAWN FM | 12/10/02 | |
| CHECKED | | |
| RESP ENG | | |
| MFG ENG | | Hold Down Bracket, 2" For RMT-1, RMT-2, RMT22-2 |
| QUAL ENG | | SIZE DWG. NO. A BR2-2 |
| SCALE CAD FILE: | | REV. A |
| SHEET 1 OF 1 | | |