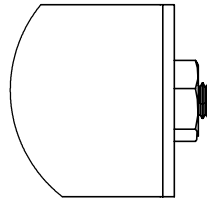


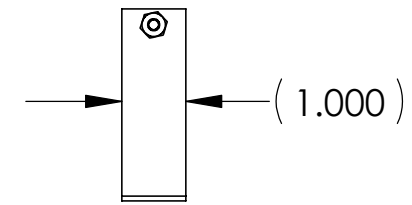
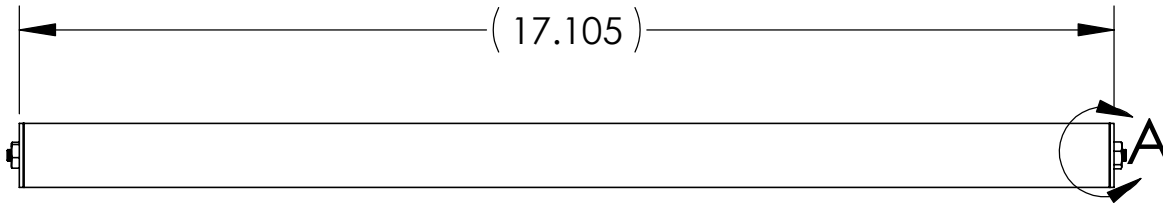
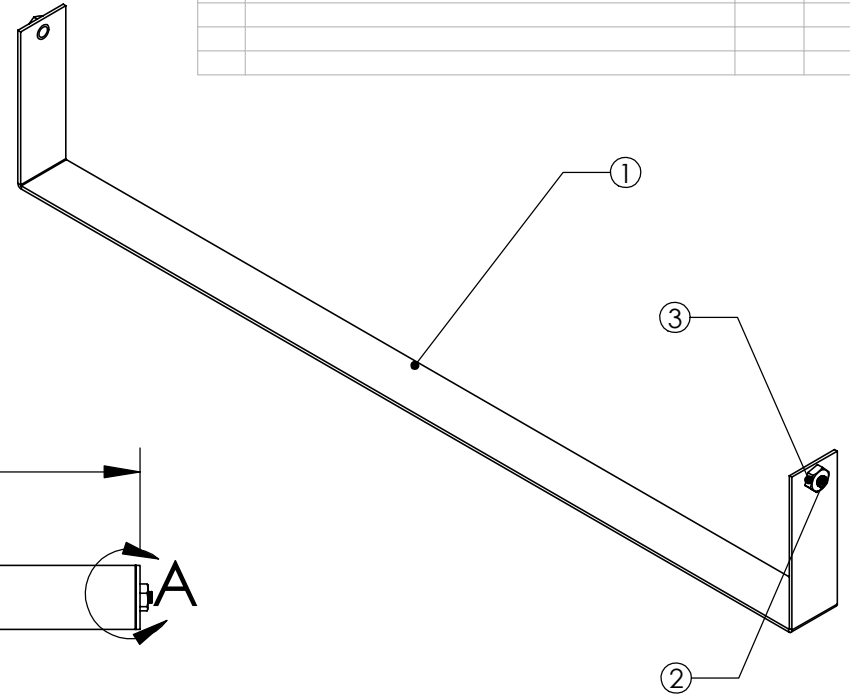
THE INFORMATION CONTAINED IN THIS DRAWING IS THE SOLE PROPERTY OF BGW SYSTEMS, INC. ANY REPRODUCTION IN PART OR WHOLE WITHOUT THE WRITTEN PERMISSION OF BGW SYSTEMS, INC. IS PROHIBITED.

REVISIONS			
REV.	DESCRIPTION	DATE	APPROVED

ITEM NO.	QTY.	PART NO.	DESCRIPTION
1	1	BR3-3	
2	2	2001-0322	PEM STUD 10-32x1/4
3	2	8553-0375	Nut Hex Kep 10-32 x 3/8



DETAIL A  
SCALE 1:1



UNLESS OTHERWISE SPECIFIED  
DIMENSIONS ARE IN INCHES  
TOLERANCES ARE:  
FRACTIONS DECIMALS ANGLES  
.XX ± 0.03 ± 0.5°  
.XXX ± 0.010

MATERIAL  
**16 GA CRS**

FINISH  
**Cardinal T002-BK08**

CAD GENERATED DRAWING.  
DO NOT MANUALLY UPDATE

DO NOT SCALE DRAWING

APPROVALS	DATE
DRAWN FM	12/10/02
CHECKED	
RESP ENG	
MFG ENG	
QUAL ENG	

**BGW** **BGW Systems, INC.**  
13130 Yukon Ave  
Hawthorne, CA 90250

Hold Down Bracket, 3" for RMT-3, RMT-4		REV. <b>A</b>
SIZE <b>A</b>	DWG. NO. <b>BR3-3</b>	
SCALE	CAD FILE:	SHEET <b>1</b> OF <b>1</b>

- NOTES:  
1) Insert studs after powder coating  
2) Install nut before packaging