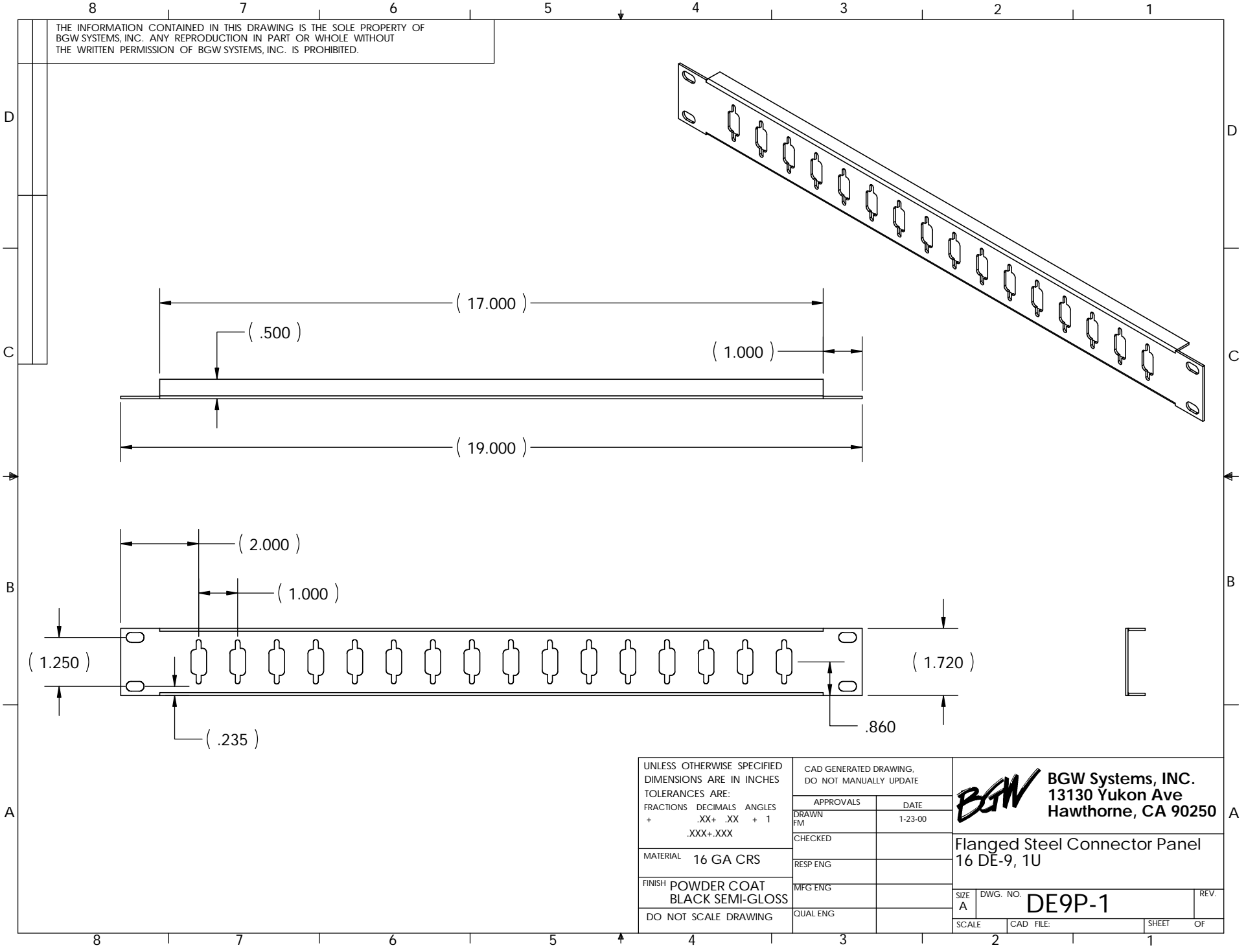


THE INFORMATION CONTAINED IN THIS DRAWING IS THE SOLE PROPERTY OF
 BGW SYSTEMS, INC. ANY REPRODUCTION IN PART OR WHOLE WITHOUT
 THE WRITTEN PERMISSION OF BGW SYSTEMS, INC. IS PROHIBITED.



UNLESS OTHERWISE SPECIFIED
 DIMENSIONS ARE IN INCHES
 TOLERANCES ARE:
 FRACTIONS DECIMALS ANGLES
 + .XX+ .XX + 1
 .XXX+.XXX

MATERIAL 16 GA CRS

FINISH POWDER COAT
 BLACK SEMI-GLOSS

DO NOT SCALE DRAWING

CAD GENERATED DRAWING, DO NOT MANUALLY UPDATE	
APPROVALS	DATE
DRAWN FM	1-23-00
CHECKED	
RESP ENG	
MFG ENG	
QUAL ENG	

BGW BGW Systems, INC.
 13130 Yukon Ave
 Hawthorne, CA 90250

Flanged Steel Connector Panel
 16 DE-9, 1U

SIZE A DWG. NO. **DE9P-1** REV.

SCALE CAD FILE: SHEET OF