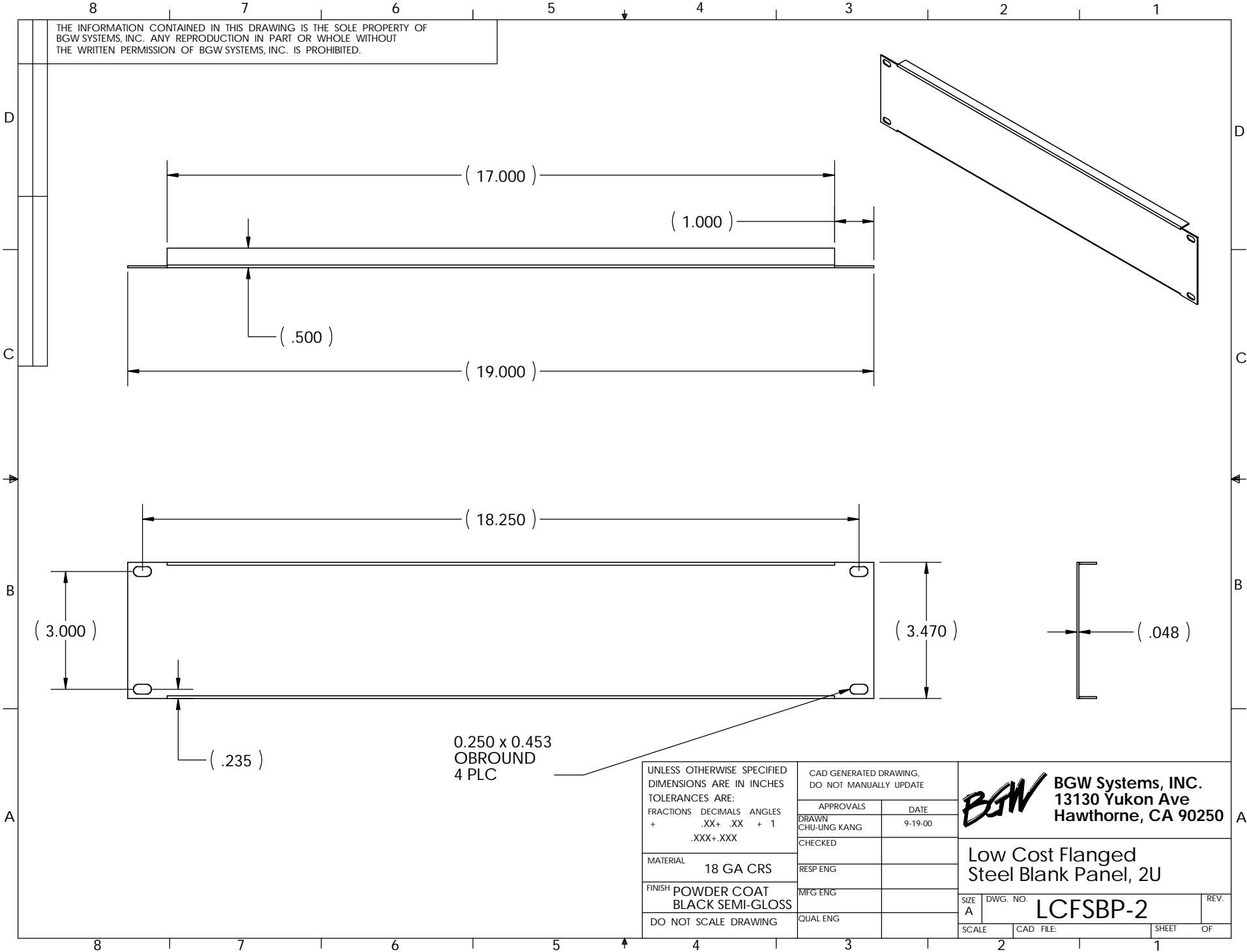


THE INFORMATION CONTAINED IN THIS DRAWING IS THE SOLE PROPERTY OF
 BGW SYSTEMS, INC. ANY REPRODUCTION IN PART OR WHOLE WITHOUT
 THE WRITTEN PERMISSION OF BGW SYSTEMS, INC. IS PROHIBITED.



| | | | |
|---|--|-----------|--|
| UNLESS OTHERWISE SPECIFIED DIMENSIONS ARE IN INCHES TOLERANCES ARE: FRACTIONS DECIMALS ANGLES + .XX+ .XX + 1 .XXX+.XXX | CAD GENERATED DRAWING, DO NOT MANUALLY UPDATE | | BGW BGW Systems, INC. 13130 Yukon Ave Hawthorne, CA 90250 |
| | APPROVALS | DATE | |
| MATERIAL | DRAWN CHU-UNG KANG | CHECKED | Low Cost Flanged Steel Blank Panel, 2U |
| FINISH | RESP ENG | MFG ENG | |
| DO NOT SCALE DRAWING | QUAL ENG | | SIZE A DWG. NO. LCFSBP-2 REV. |
| | SCALE | CAD FILE: | SHEET OF |