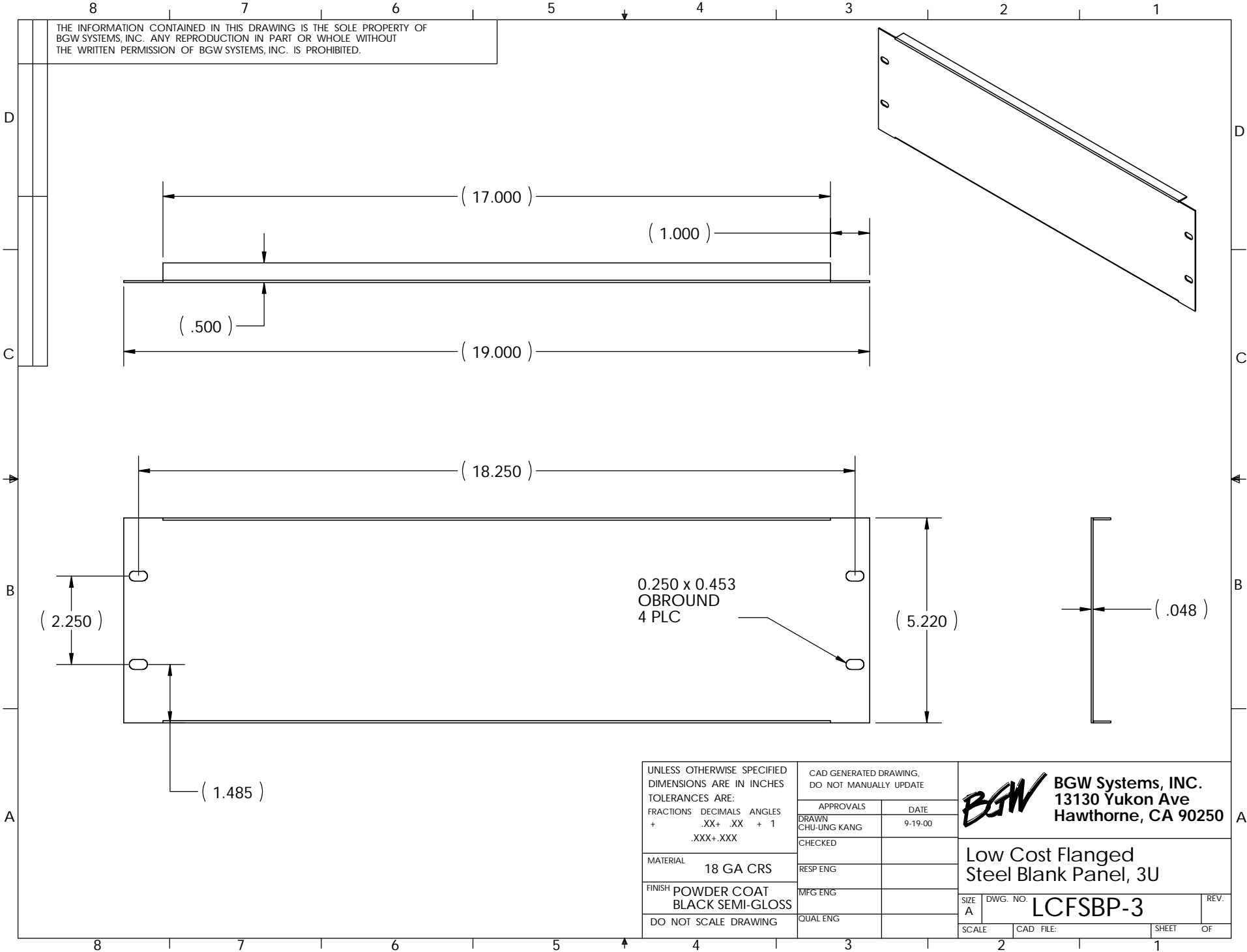


THE INFORMATION CONTAINED IN THIS DRAWING IS THE SOLE PROPERTY OF
 BGW SYSTEMS, INC. ANY REPRODUCTION IN PART OR WHOLE WITHOUT
 THE WRITTEN PERMISSION OF BGW SYSTEMS, INC. IS PROHIBITED.



UNLESS OTHERWISE SPECIFIED DIMENSIONS ARE IN INCHES TOLERANCES ARE: FRACTIONS DECIMALS ANGLES + .XX+ .XX + 1 .XXX+.XXX		CAD GENERATED DRAWING, DO NOT MANUALLY UPDATE	
MATERIAL 18 GA CRS		APPROVALS	DATE
FINISH POWDER COAT BLACK SEMI-GLOSS		DRAWN CHU-UNG KANG	9-19-00
DO NOT SCALE DRAWING		CHECKED	
		RESP ENG	
		MFG ENG	
		QUAL ENG	

BGW BGW Systems, INC.
 13130 Yukon Ave
 Hawthorne, CA 90250

Low Cost Flanged
 Steel Blank Panel, 3U

SIZE A DWG. NO. **LCFSBP-3** REV.

SCALE CAD FILE: SHEET OF