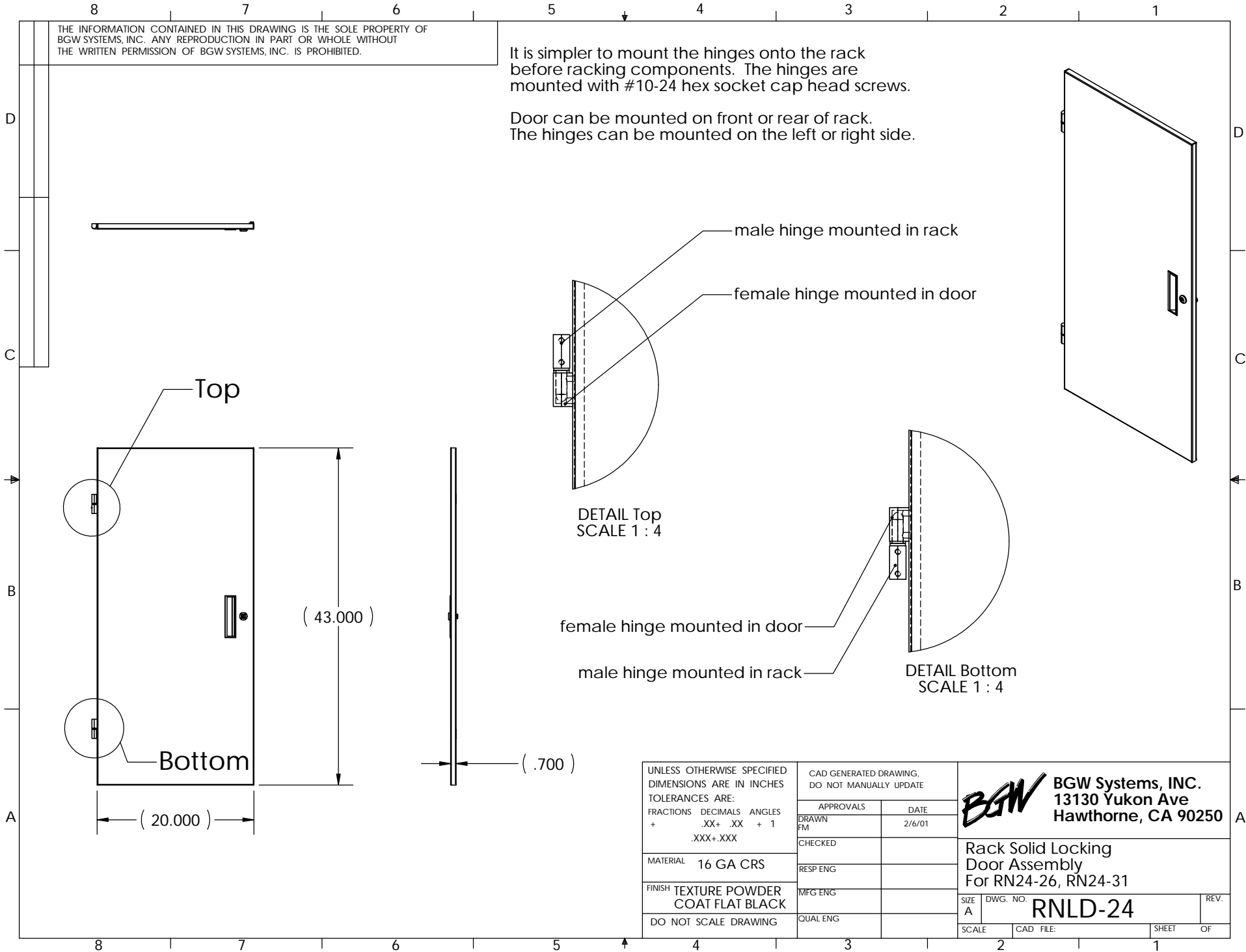


THE INFORMATION CONTAINED IN THIS DRAWING IS THE SOLE PROPERTY OF
 BGW SYSTEMS, INC. ANY REPRODUCTION IN PART OR WHOLE WITHOUT
 THE WRITTEN PERMISSION OF BGW SYSTEMS, INC. IS PROHIBITED.

It is simpler to mount the hinges onto the rack
 before racking components. The hinges are
 mounted with #10-24 hex socket cap head screws.

Door can be mounted on front or rear of rack.
 The hinges can be mounted on the left or right side.



UNLESS OTHERWISE SPECIFIED DIMENSIONS ARE IN INCHES TOLERANCES ARE: FRACTIONS DECIMALS ANGLES + .XX+ .XX + 1 .XXX+ .XXX	CAD GENERATED DRAWING, DO NOT MANUALLY UPDATE		BGW BGW Systems, INC. 13130 Yukon Ave Hawthorne, CA 90250
	APPROVALS	DATE	
MATERIAL 16 GA CRS	DRAWN FM	2/6/01	Rack Solid Locking Door Assembly For RN24-26, RN24-31
FINISH TEXTURE POWDER COAT FLAT BLACK	CHECKED		
DO NOT SCALE DRAWING	RESP ENG		SIZE A
	MFG ENG		DWG. NO. RNLD-24
	QUAL ENG		REV.
	SCALE	CAD FILE:	SHEET OF