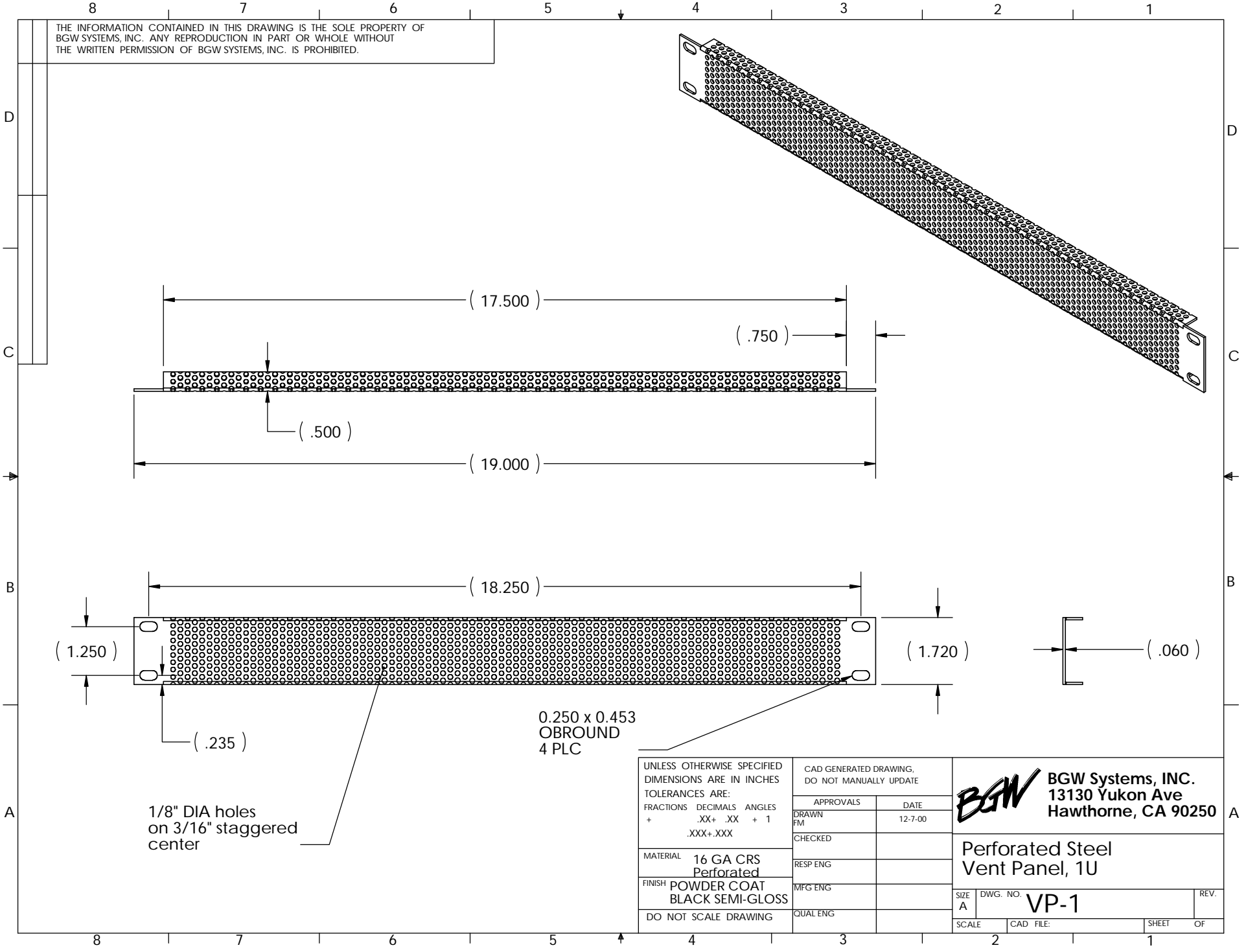



THE INFORMATION CONTAINED IN THIS DRAWING IS THE SOLE PROPERTY OF
 BGW SYSTEMS, INC. ANY REPRODUCTION IN PART OR WHOLE WITHOUT
 THE WRITTEN PERMISSION OF BGW SYSTEMS, INC. IS PROHIBITED.



0.250 x 0.453
 OBROUND
 4 PLC

1/8" DIA holes
 on 3/16" staggered
 center

UNLESS OTHERWISE SPECIFIED DIMENSIONS ARE IN INCHES TOLERANCES ARE: FRACTIONS DECIMALS ANGLES + .XX+ .XX + 1 .XXX+ .XXX	CAD GENERATED DRAWING, DO NOT MANUALLY UPDATE		 BGW Systems, INC. 13130 Yukon Ave Hawthorne, CA 90250
	APPROVALS	DATE	
	DRAWN FM		12-7-00
	CHECKED		
MATERIAL 16 GA CRS Perforated	RESP ENG		Perforated Steel Vent Panel, 1U
FINISH POWDER COAT BLACK SEMI-GLOSS	MFG ENG		
DO NOT SCALE DRAWING	QUAL ENG		SIZE A DWG. NO. VP-1 REV.
SCALE		CAD FILE:	SHEET OF