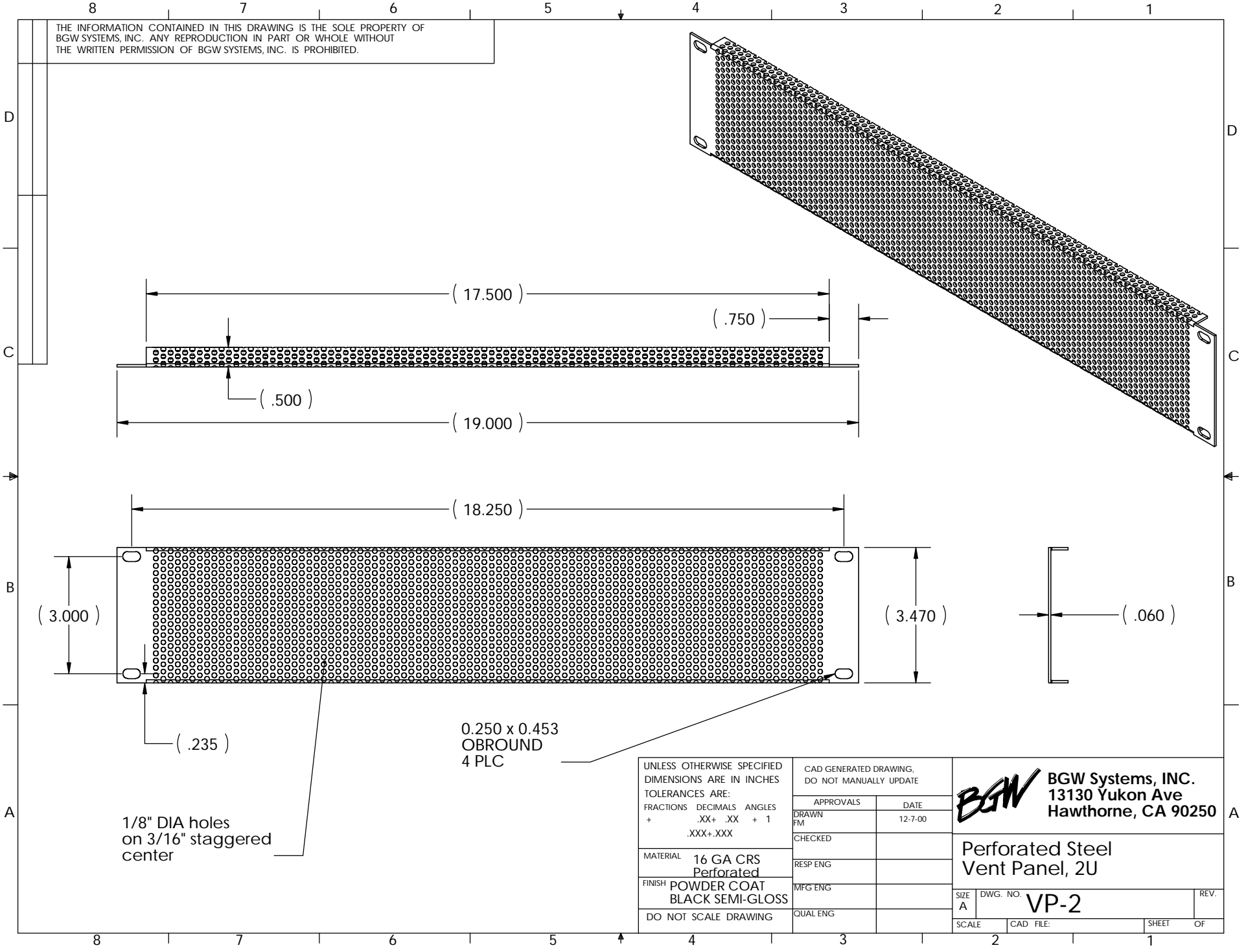


THE INFORMATION CONTAINED IN THIS DRAWING IS THE SOLE PROPERTY OF
 BGW SYSTEMS, INC. ANY REPRODUCTION IN PART OR WHOLE WITHOUT
 THE WRITTEN PERMISSION OF BGW SYSTEMS, INC. IS PROHIBITED.



1/8" DIA holes
 on 3/16" staggered
 center

0.250 x 0.453
 OBROUND
 4 PLC

UNLESS OTHERWISE SPECIFIED DIMENSIONS ARE IN INCHES TOLERANCES ARE:		CAD GENERATED DRAWING, DO NOT MANUALLY UPDATE	
FRACTIONS DECIMALS ANGLES + .XX+ .XX + 1 .XXX+.XXX		APPROVALS	DATE
MATERIAL 16 GA CRS Perforated		DRAWN FM	12-7-00
FINISH POWDER COAT BLACK SEMI-GLOSS		CHECKED	
DO NOT SCALE DRAWING		RESP ENG	
		MFG ENG	
		QUAL ENG	

BGW BGW Systems, INC.
 13130 Yukon Ave
 Hawthorne, CA 90250

Perforated Steel
 Vent Panel, 2U

SIZE A	DWG. NO. VP-2	REV.
SCALE	CAD FILE:	SHEET OF